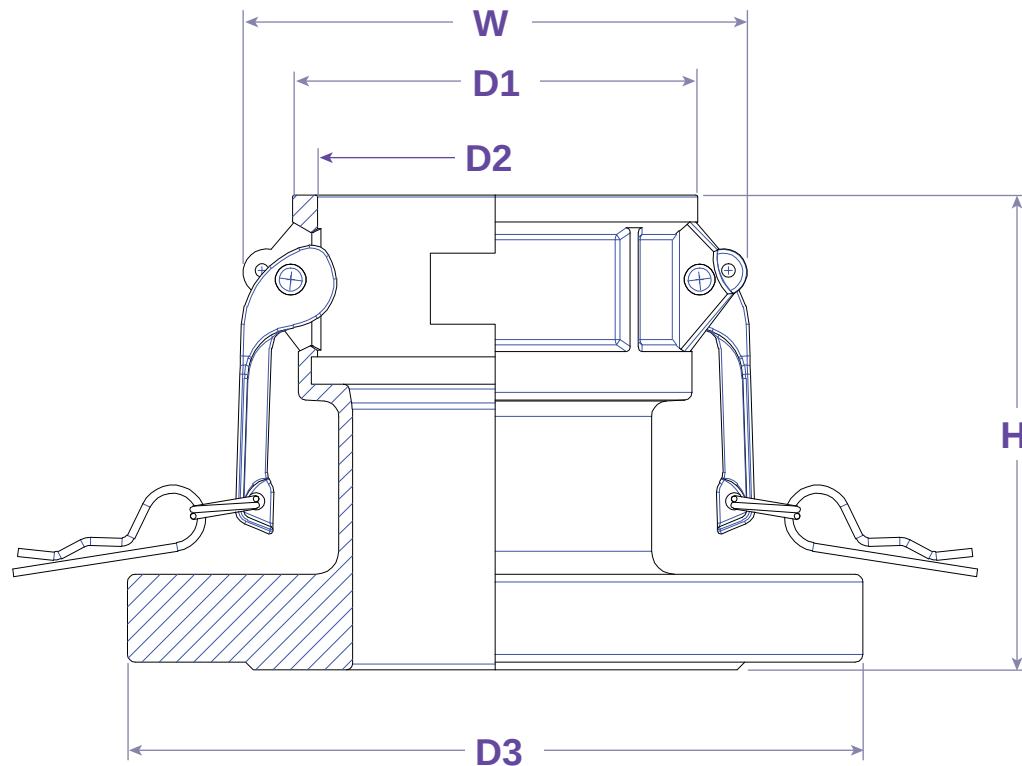




TYPE FC



FEATURES & APPLICATIONS:

• **General Uses:**

A camlock fitting is a type of coupling that is used to connecting hose and or pipes together that transfers liquids, powders and granules. A straight through connection is made that maintains the pipe size and allows the free flow of materials being transferred.

Size	Working PSI	D1	D2	D3	W	H	PART #
1"	150	1.795	1.465	4.000	2.650	3.543	FC 100SS
1-1/2"	150	2.500	2.122	5.500	3.307	4.724	FC 150SS
2"	150	2.894	2.508	6.000	3.780	4.547	FC 200SS
3"	75	4.134	3.626	7.500	5.142	4.843	FC 300SS
4"	40	5.197	4.732	9.000	6.299	4.843	FC 400SS
6"	40	7.579	6.949	10.906	9.016	7.224	FC 600SS
8"	40	9.142	8.957	13.504	11.654	7.677	FC 800SSPTK

WARNING: Cam & Groove Couplings should NOT be used with any compressed gas, including steam or air. Metal fittings should NOT be used with Polypropylene Cam & Groove. Dust Caps and Dust Plugs are NOT designed for pressure applications.

Note: All Seal Fast Cam & Groove Stainless Bodies are 316 Investment with 304 Handles.

TITLE **TYPE FC - ANSI CLASS 150 FLANGED SPECIALTY ADAPTER**

DISCLAIMER

All drawings and specifications are subject to change without notice. Drawings represent general dimensions of our products. Seal Fast cannot guarantee the dimensions in the drawing will exactly match those in the drawing. This drawing is the property of Seal Fast Inc. Copying or reproduction of this drawing is expressly prohibited.

MATERIAL

SUS 316

DRAWING NOT TO SCALE

PART #

FC...SS

