

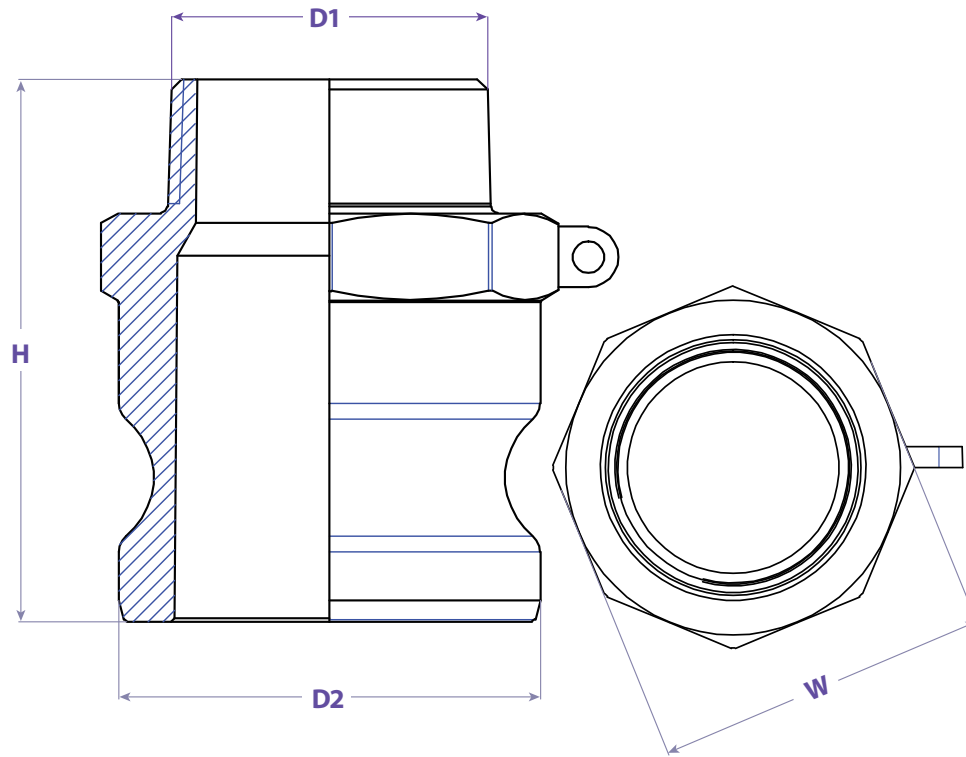


**SEALFAST**  
THE SIMPLE SOLUTION

**COUPLINGS  
& ACCESSORIES**



**TYPE FR**



#### FEATURES & APPLICATIONS:

##### • General Uses:

A camlock fitting is a type of coupling that is used to connecting hose and or pipes together that transfers liquids, powders and granules. A straight through connection is made that maintains the pipe size and allows the free flow of materials being transferred.

Size	Working PSI	D1	D2	H	W	PART #
1-1/2" x 2"	150	2" NPT	2.102	3.032	2.520	FR1520AL
1-1/2" x 3"	150	3" NPT	2.102	3.583	3.661	FR1530AL
2" x 1-1/2"	150	1-1/2" NPT	2.480	3.189	2.488	FR2015AL
2" x 2-1/2"	150	2-1/2" NPT	2.480	3.661	3.071	FR2025AL
2" x 3"	150	3" NPT	2.480	3.819	3.583	FR2030AL
2-1/2" x 3"	150	3" NPT	2.984	3.937	3.642	FR2530AL
3" x 1-1/2"	150					FR3015AL
3" x 2"	150	2" NPT	3.602	3.543	3.646	FR3020AL
3" x 2-1/2"	150					FR3025AL
3" x 4"	150	4" NPT	3.602	4.291	4.528	FR3040AL
4" x 2"	150	2" NPT	4.705	3.917	4.724	FR4020AL
4" x 3"	150	3" NPT	4.705	4.272	4.724	FR4030AL
4" x 6"	150	6" NPT	4.705	4.587	6.634	FR4060AL

**WARNING:** Cam & Groove Couplings should **NOT** be used with any compressed gas, including steam or air. Metal fittings should **NOT** be used with Polypropylene Cam & Groove. Dust Caps and Dust Plugs are **NOT** designed for pressure applications.

Note: All Seal Fast Cam & Groove Stainless Bodies are 316 Investment with 304 Handles.

TITLE **TYPE FR - MALE ADAPTER X MALE NPT REDUCING F**

#### DISCLAIMER

All drawings and specifications are subject to change without notice. Drawings represent general dimensions of our products. Seal Fast cannot guarantee the dimensions in the drawing will exactly match those in the drawing. This drawing is the property of Seal Fast Inc. Copying or reproduction of this drawing is expressly prohibited.

#### MATERIAL

**A226AL**

**DRAWING NOT TO SCALE**

#### PART #

**FR...AL**



sales@sealfast.com

800.231.0734

sealfast.com

5603 Harvey Wilson Drive, Houston, TX 77020