

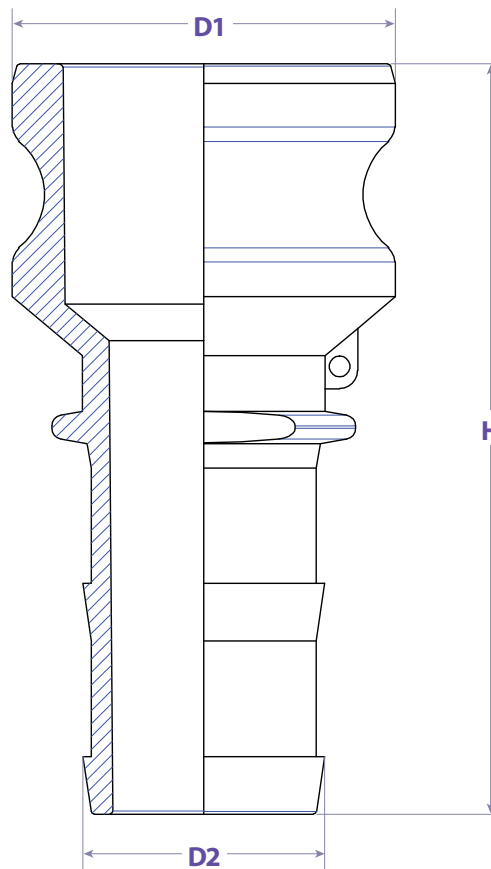


SEALFAST
THE SIMPLE SOLUTION

**COUPLINGS
& ACCESSORIES**



TYPE ER



FEATURES & APPLICATIONS:

• General Uses:

A camlock fitting is a type of coupling that is used to connecting hose and or pipes together that transfers liquids, powders and granules. A straight through connection is made that maintains the pipe size and allows the free flow of materials being transferred.

Size	D1	D2	H	PART #
1-1/2" x 1"	2.102	1.051	4.8622	ER1510AL
1-1/2" x 3"	2.102	3.091	4.8622	ER1530AL
2" x 1"	2.484	1.051	4.8622	ER2010AL
2" x 1-1/2"	2.484	1.567	4.862	ER2015AL
2" x 2-1/2"	2.484	2.598	5.827	ER2025AL
2" x 3"	3.484	3.091	6.772	ER2030AL
3" x 2"	3.602	2.067	5.591	ER3020AL
3" x 2-1/2"	3.602	2.598	5.850	ER3025AL
3" x 4"	3.602	4.087	7.087	ER3040AL
4" x 2"	4.7047	3.0984	6.7717	ER4020AL
4" x 3"	4.705	3.098	6.772	ER4030AL

WARNING: Cam & Groove Couplings should **NOT** be used with any compressed gas, including steam or air. Metal fittings should **NOT** be used with Polypropylene Cam & Groove. Dust Caps and Dust Plugs are **NOT** designed for pressure applications.

Note: All Seal Fast Cam & Groove Stainless Bodies are 316 Investment with 304 Handles.

TITLE TYPE ER - MALE ADAPTER X SHANK REDUCING E

DISCLAIMER

All drawings and specifications are subject to change without notice. Drawings represent general dimensions of our products. Seal Fast cannot guarantee the dimensions in the drawing will exactly match those in the drawing. This drawing is the property of Seal Fast Inc. Copying or reproduction of this drawing is expressly prohibited.

MATERIAL

A226AL

DRAWING NOT TO SCALE

PART

ER...AL



sales@sealfast.com

800.231.0734

sealfast.com

5603 Harvey Wilson Drive, Houston, TX 77020