

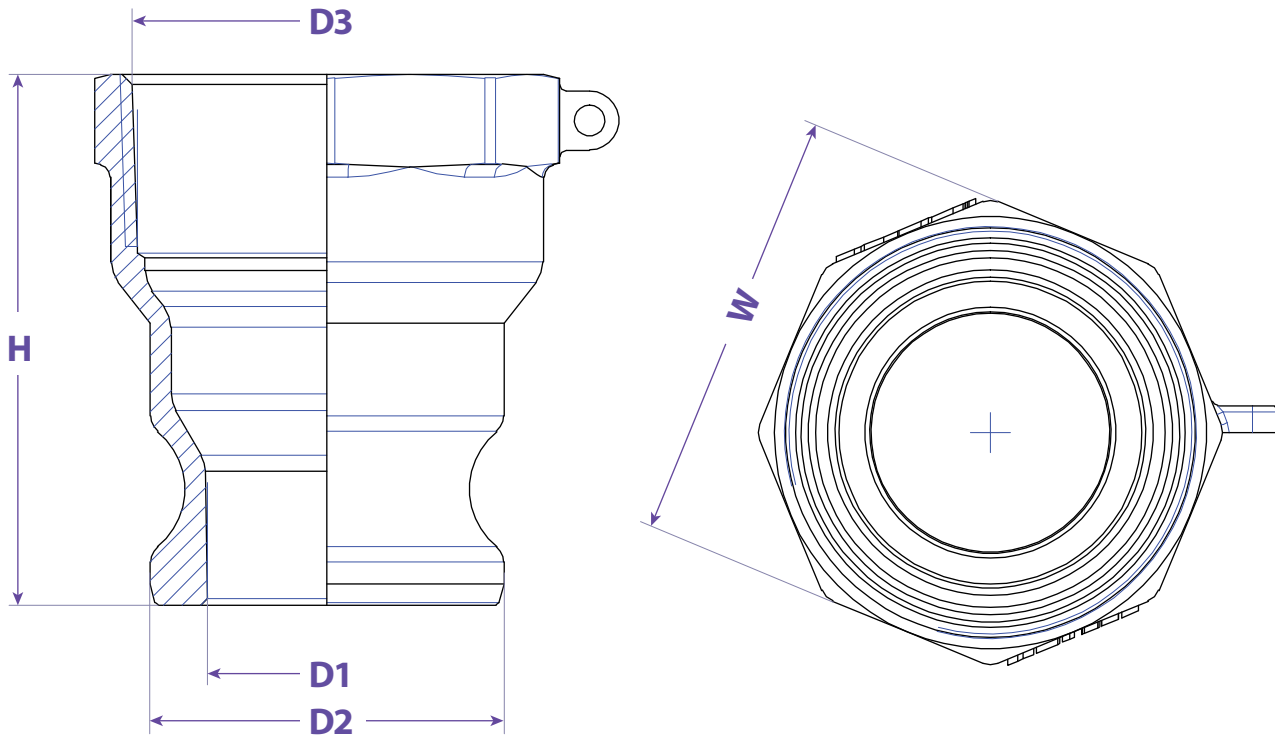


SEALFAST
THE SIMPLE SOLUTION

**COUPLINGS
& ACCESSORIES**



TYPE AR



FEATURES & APPLICATIONS:

• General Uses:

A camlock fitting is a type of coupling that is used to connecting hose and or pipes together that transfers liquids, powders and granules. A straight through connection is made that maintains the pipe size and allows the free flow of materials being transferred.

Size	Working PSI	D1	D2	D3	H	W	PART #
1-1/2" x 2"	150	1.417	2.102	2" NPT	3.150	2.567	AR1520AL
2" x 1-1/2"	150	1.826	2.480	1-1/2" NPT	2.402	2.087	AR2015AL
2" x 2-1/2"	150	1.807	2.480	2-1/2" NPT	3.347	3.032	AR2025AL
2" x 3"	150	2.394	2.984	2" NPT	2.362	2.571	AR2030AL
2-1/2" x 2"	150	2.394	2.984	2" NPT	2.362	2.571	AR2520AL
3" x 2"							AR3020AL
3" x 4"	150	2.886	3.602	4" NPT	3.622	4.724	AR3040AL
4" x 3"	150	3.917	4.705	3" NPT	2.736	3.661	AR4030AL
4" x 6"	150						AR4060AL
6" x 4"	75	3.891	4.705	6" NPT	4.184	6.929	AR6040AL

WARNING: Cam & Groove Couplings should **NOT** be used with any compressed gas, including steam or air. Metal fittings should **NOT** be used with Polypropylene Cam & Groove. Dust Caps and Dust Plugs are **NOT** designed for pressure applications.

Note: All Seal Fast Cam & Groove Stainless Bodies are 316 Investment with 304 Handles.

TITLE TYPE AR

DISCLAIMER

All drawings and specifications are subject to change without notice. Drawings represent general dimensions of our products. Seal Fast cannot guarantee the dimensions in the drawing will exactly match those in the drawing. This drawing is the property of Seal Fast Inc. Copying or reproduction of this drawing is expressly prohibited.

MATERIAL

A226AL

DRAWING NOT TO SCALE

PART

AR...AL



sales@sealfast.com

800.231.0734

sealfast.com

5603 Harvey Wilson Drive, Houston, TX 77020