

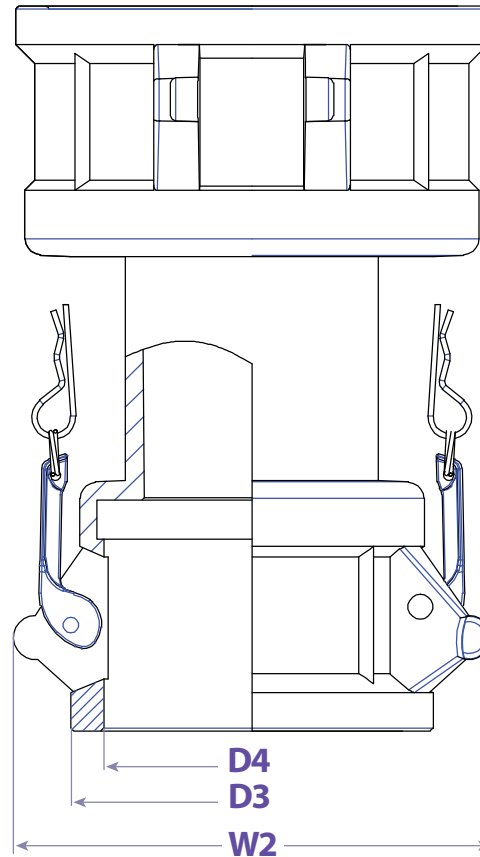
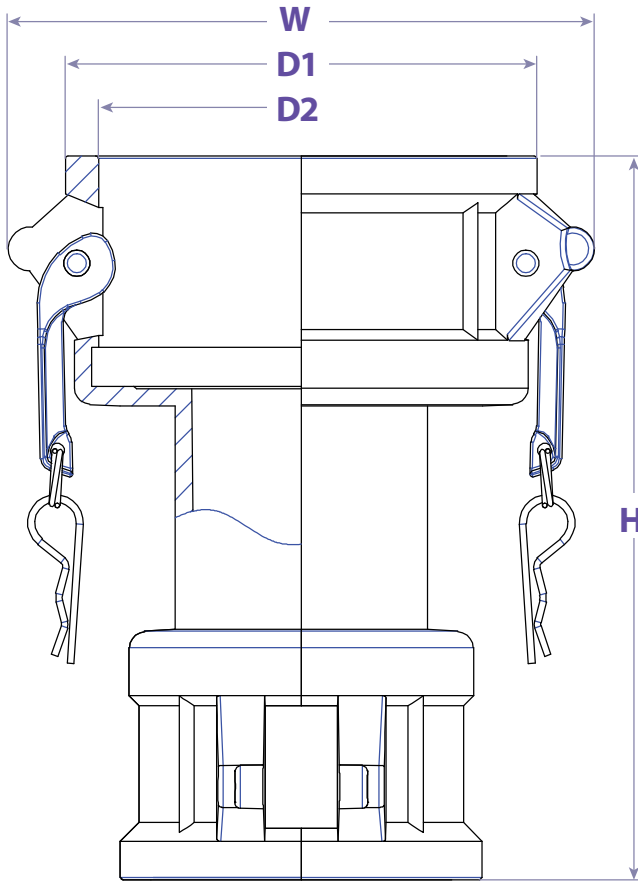


**SEALFAST**  
THE SIMPLE SOLUTION

# COUPLINGS & ACCESSORIES



TYPE DD



## FEATURES & APPLICATIONS:

### • General Uses:

A camlock fitting is a type of coupling that is used to connecting hose and or pipes together that transfers liquids, powders and granules. A straight through connection is made that maintains the pipe size and allows the free flow of materials being transferred.

Size	Working PSI	D1	D2	D3	D4	W1	W2	H	PART #
1-1/2"	150	2.598	2.122	2.598	2.122	3.425	3.425	5.197	DD150AL
2"	150	2.992	2.508	2.992	2.508	3.780	3.780	5.512	DD200AL
2-1/2"	150	3.520	3.008	3.520	3.008	4.421	4.421	5.945	DD250AL
3"	150	4.134	3.626	4.134	3.626	5.079	5.079	5.945	DD300AL
3" x 2"	150	4.134	3.626	2.992	2.508	5.079	3.780	5.709	DD3020AL
3" x 2-1/2"	150	4.134	3.626	3.520	3.008	5.201	4.591	6.299	DD3025AL
3" x 4"	150	5.354	4.732	4.134	3.626	6.181	5.079	6.299	DD3040AL
4"	150	5.354	4.732	5.353	4.732	6.181	6.181	6.378	DD400AL
4 x 1-1/2"	150	5.354	4.732	5.598	2.122	6.378	3.543	6.299	DD4015AL
5" x 4"	75								DD5040AL
6"	75	7.579	6.949	7.579	6.949	8.898	8.898	8.150	DD600AL

**WARNING:** Cam & Groove Couplings should **NOT** be used with any compressed gas, including steam or air. Metal fittings should **NOT** be used with Polypropylene Cam & Groove. Dust Caps and Dust Plugs are **NOT** designed for pressure applications.

Note: All Seal Fast Cam & Groove Stainless Bodies are 316 Investment with 304 Handles.

## TITLE TYPE DD - FEMALE X FEMALE SPOOL COUPLER

### DISCLAIMER

All drawings and specifications are subject to change without notice. Drawings represent general dimensions of our products. Seal Fast cannot guarantee the dimensions in the drawing will exactly match those in the drawing. This drawing is the property of Seal Fast Inc. Copying or reproduction of this drawing is expressly prohibited.

### MATERIAL

**A226AL**

**DRAWING NOT TO SCALE**

### PART #

**DD...AL**



sales@sealfast.com

800.231.0734

sealfast.com

5603 Harvey Wilson Drive, Houston, TX 77020