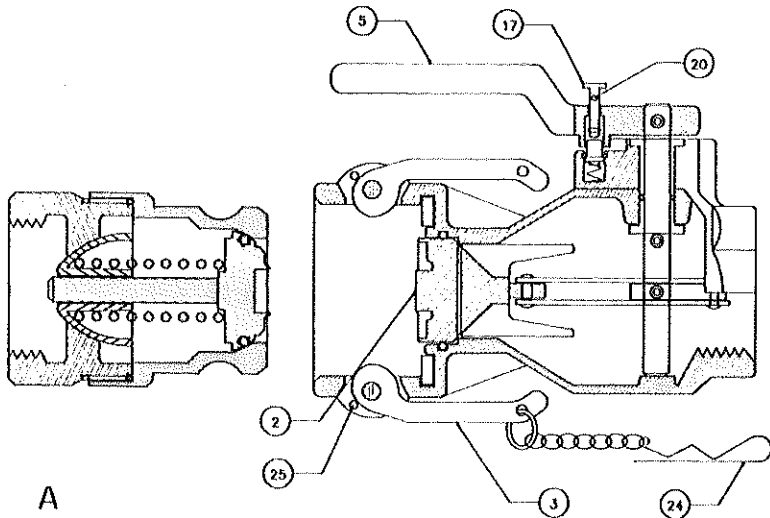


# INSTRUCTION MANUAL FOR OPERATION AND REPAIR OF SFI DRY-DISCONNECT COUPLING



## OPERATION INSTRUCTIONS:

1. Attach the Adaptor and Coupler to your lines or hoses. Use caution to assure that only the hex portions are used for tightening of fittings. **Do not use the ribbed area of the fittings to tighten.** (Drawing A)

2. Put Coupler and Adaptor together, lock into place with Cam Arms (3). Use the provided Safety Pin (24) in the Safety Pin Hole (25) to prevent accidental opening. (Drawing B)

3. To open Valve. The valve Poppet (2), located inside the Coupler, is designed for one-hand operation. By pressing the button (17) down the handle (5) is released, and when rotated counter-clockwise the material will begin to flow. (Drawing C)

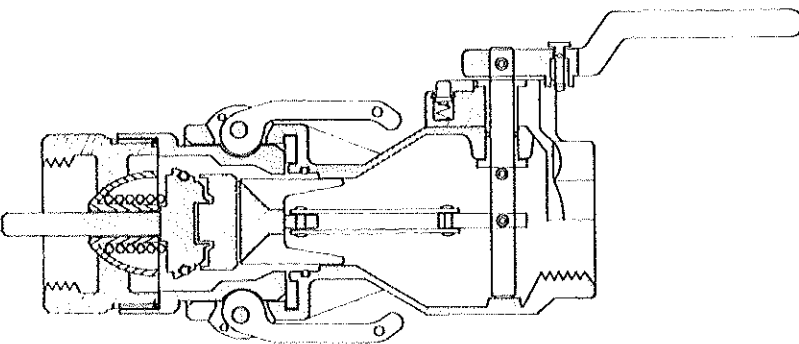
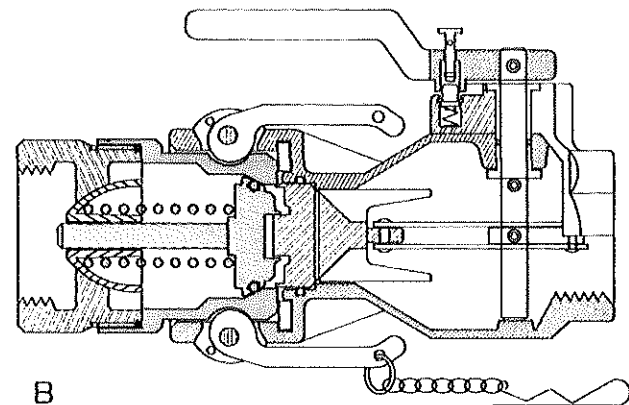
4. To close Valve: Stop the material flow by closing poppet (2). Rotate handle (5) clockwise until it "clicks". Note: When fully closed the handle (5) will be locked in the closed position.

5. An additional safety/security feature allows a small padlock or safety pin (24) to be placed in the button hole (20) to prevent accidental or unauthorized opening of the valve.

## WARNING:

**DO NOT OPEN THE COUPLER VALVE UNLESS IT IS SECURELY ATTACHED TO AN ADAPTOR.**

**DO NOT REMOVE COUPLER FROM ADAPTOR UNTIL THE HANDLE (5) IS LOCKED INTO THE CLOSED POSITION.**



# SFI DRY-DISCONNECT COUPLING

## DISASSEMBLY INSTRUCTIONS

### COUPLER:

1. Remove the coupler from line or hose assembly.
2. Drive out Roll Pin(12) and (13), using the punch provided in the repair kit, from Shaft(6).
3. Pull Shaft(6) together with Handle(5) out of Body(1) thru Retainer (11) and Bushing (9).
4. Using a soft object, such as a piece of wood or plastic, drive the Poppet(2) / link(7)/ Cam(8) sub-assembly out of Body(1) from the threaded end.
5. Remove Retainer(11), O-Ring(10), and Bushing(9) from body(1).
6. Remove Gasket(22) from Body(1).
7. Remove O-Ring(23) from Body(1)  
**Note:** A small dental pick or stiff wire will help with removal. It is impossible to remove O-Ring (23) without destroying it.
8. Inspect Cam Arms(3) and Cam Pins(4) for wear.  
**Note:** It is not necessary to remove Cam Arms(3) and Cam Pins(4) unless wear is found and replacement is required.
9. Clean all parts and inspect for damage or wear. replace those affected parts.

### ADAPTOR

1. Remove the Adaptor from line or hose assembly.
2. Mount hex threaded Pipe End(2) into a vise, By Pushing Disc Assy.(3) down, the force from Spring (4), can be removed from Adapter(1). This will allow Adapter(1) to be un-threaded from Pipe End(2) with pipe wrench.  
**Note:** Do not place the pipe wrench on or around the camlock area of the Adapter(1).
3. Remove O-ring(5), Spring(4) and O-Ring(6).  
**Note:** It is impossible to remove O-Ring(5) without destroying it.
4. Clean all parts and inspect for damage or wear. If damage or wear is found, replace those affected parts.

## REASSEMBLY INSTRUCTIONS

### COUPLER

1. Make sure all parts are clean before reassembly.
2. Lightly lubricate the new poppet O-Ring(23) and install into Body(1).  
**Note:** Teflon Encapsulated O-Ring which installation will be easier if it is first heated in hot water.
3. Install Poppet(2)/Link(7)/Cam(8) sub-assembly into Body(1). Gently push the poppet into body(1), extreme force is not necessary.
4. Install the large diameter first, of Bushing(9), onto Shaft(6).
5. Lightly lubricate new O-Ring(10) and slide it onto Shaft(6) up to Bushing(9).
6. Place Retainer(11) into the hole inside Body(1). Start to slide Shaft(6) with Handle(5)/Bushing(9)/O-Ring(10) thru Cam(8) and into the boss hole located in the bottom of Body(1).  
**Note:** The Link(7) should be below the Shaft(6) and the logo on Cam(8) should be face to Handle(5).
7. Install new Roll Pins (12) and (13), using the punch provided in the repair kit. It may be necessary to rotate Shaft(6), to align the side holes of Cam(8) to allow installation of Roll Pin (12).
8. Place a new Gasket (22) into the recess of Body(1).
9. Operate the Handle(5), open and closed, to assure that there is no binding and that the components are moving correctly.

### ADAPTOR

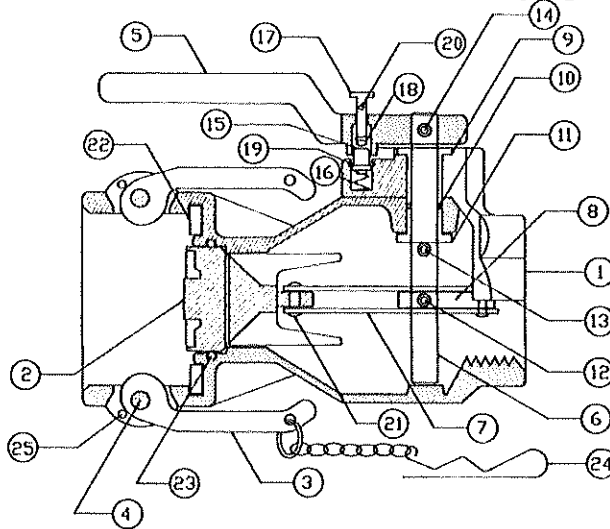
1. Make sure all parts are clean before reassembly.
2. Mount threaded Pipe End(2) by hex area into a vise.
3. Lightly lubricate a new O-Ring (5) and install onto Disc Assy.(3).
4. Lightly lubricate a new O-Ring(6) and install on the recess of Pipe End(2).
5. Place Spring(4) and Disc Assy.(3) into Pipe End(2).
6. Insert Adapter(1) over the Disc Assy.(3) and Spring (4) and apply a light downward pressure, while turning, to engage the threads on Pipe End(2).
7. Tighten the Adapter(1) onto Pipe End (2) using a pipe wrench.  
**Note:** Do not place the pipe wrench on or around the camlock area of Adapter(1).

## WARNING:

**BEFORE DISASSEMBLY OF ADAPTOR OR COUPLER, ALL PRESSURE MUST BE RELIEVED FROM LINE/HOSE.**

**SEAL FAST can not be held responsible for integrity of a field rebuilt product. It is strongly recommended that the procedures outlined be followed by manual testing the operation of the coupling, followed by pressure leak testing coupling before placing the unit back into service.**

# SFI DRY-DISCONNECT COUPLING

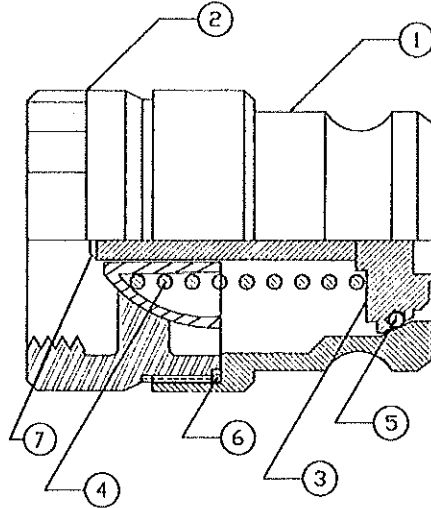


## COUPLER PART NUMBERS

KEY	DESCRIPTION	MATERIAL	QTY.	1-1/2" COUPLER	2" COUPLER	3" COUPLER
1	BODY	ALUMINUM A356/T6	1	71501AL	72001AL	73001AL
		STAINLESS STEEL		71501SS	72001SS	73001SS
2	POPPET	ALUMINUM A356/T6	1	71502AL	72002AL	73002AL
		STAINLESS STEEL		71502SS	72002SS	73002SS
3	CAM ARM	STAINLESS STEEL	2	H1225SS	H1225SS	H3040SS
4	CAM PIN	STAINLESS STEEL	2	P6232	P6232	P7839
5	HANDLE	CST PLATED	1	H1205ST	H1205ST	H3405ST
		STAINLESS STEEL		H1205SS	H1205SS	H3405SS
6	SHAFT	STAINLESS STEEL	1	71206	71206	73006
7	LINK	STAINLESS STEEL	2	71507	72007	73007
8	CAM	STAINLESS STEEL	1	71508	72008	73008
9	BUSHING	STAINLESS STEEL	1	71209	71209	73009
*10	O-RING	BUNA-N	1	R1210N	R1210N	R3010N
		VITON		R1210V	R1210V	R3010V
		TEFLON ENCAP. VITON		R1210T	R1210T	R3010T
11	RETAINER	STAINLESS STEEL	1	71211	71211	73411
*12	ROLL PIN	STAINLESS STEEL	1	P4022	P4022	P6032
*13	ROLL PIN	STAINLESS STEEL	1	P4022	P4022	P6032
14	PIN	STAINLESS STEEL	1	P4627	P4627	P4636
15	STUD	STAINLESS STEEL	1	71215	71215	73015
16	SPRING	STAINLESS STEEL	1	71216	71216	73016
17	BUTTON	STAINLESS STEEL	1	71217	71217	73017
18	C-RING	STAINLESS STEEL	1	71218	71218	73018
19	C-RING	STAINLESS STEEL	1	71219	71219	73019
20	BUTTON HOLE		1			
21	RIVET	STAINLESS STEEL	2	P4719	P4719	P6025
*22	GASKET	VITON		G150V	G200V	G300V
		TEFLON		G150T	G200T	G300T
*23	O-RING	VITON		R1523V	R2023V	R3023V
		TEFLON ENCAP. VITON		R1523T	R2023T	R3023T
24	SAFETY PIN & CHAIN	STEEL PLATED	1	C1224ST	C1224ST	C3024ST
		STAINLESS STEEL		C1224SS	C1224SS	C3024SS
25	SAFETY PIN HOLE		2			

\* REPAIR KIT: ( All Coupler repair kits include a punch )

# SFI DRY-DISCONNECT COUPLING



KEY	DESCRIPTION	MATERIAL	QTY.	1-1/2" ADAPTOR	2" ADAPTOR	3" ADAPTOR
1	ADAPTER	ALUMINUM A356/T6 STAINLESS STEEL	1	61501AL 61501SS	62001AL 62001SS	63001AL 63001SS
2	PIPE END	ALUMINUM A356/T6 STAINLESS STEEL	1	61502AL 61502SS	62002AL 62002SS	63002AL 63002SS
3	DISC ASSY.	ALUMINUM A356/T6 STAINLESS STEEL	1	61503AL 61503SS	62003AL 62003SS	63003AL 63003SS
4	SPRING	SPRING STEEL STAINLESS STEEL	1	61504ST 61504SS	62004ST 62004SS	63004ST 63004SS
*5	O-RING	VITON TEFLON ENCAP. VITON		R1505V R1505T	R2005V R2005T	R3005V R3005T
*6	O-RING	VITON TEFLON ENCAP. VITON	1	R1506V R1506T	R2006V R2006T	R3006V R3006T
7	Bearing Sleeve		1	BS1222	BS1222	BS1650

\* RECOMMENDED REPAIR KIT

## SEAL FASTDRY- DISCONNECT COUPLING - PRODUCT NO. (ASSEMBLY)

SIZE MATERIAL/SEAL	1-1/2" ADAPTOR	1-1/2" COUPLER	2" ADAPTOR	2" COUPLER	3" ADAPTOR	3" COUPLER
ALUMINUM / VITON	622A-150	762D-150	622A-200	762D-200	622A-300	762D-300
ALUMINUM/TEFLON	623A-150	763D-150	623A-200	763D-200	623A-300	763D-300
STAINLESS / VITON	672A-150	772D-150	672A-200	772D-200	672A-300	772D-300
STAINLESS/TEFLON	673A-150	773D-150	673A-200	773D-200	673A-300	773D-300

\* MARKS COMPONENTS OF REPAIR KIT

VITON	RK-150AV	RK-150DV	RK-200AV	RK-200DV	RK-300AV	RK-300DV
TEFLON	RK-150AT	RK-150DT	RK-200AT	RK-200DT	RK-300AT	RK-300DT